

Trespa Toplab Base (formerly Athlon)

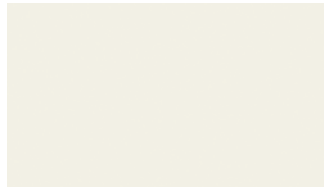


Colour Options

The colours shown here are a representation of the actual colour, a sample can be provided if required.



White



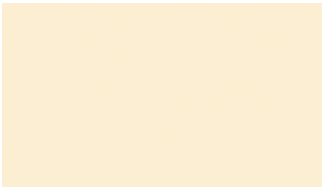
Pastel Grey



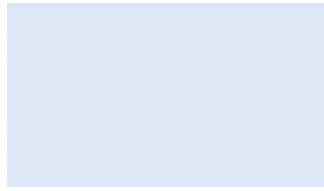
Silver Grey



Mid Grey



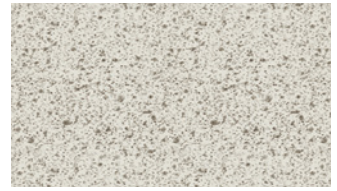
Sand



Icy Blue



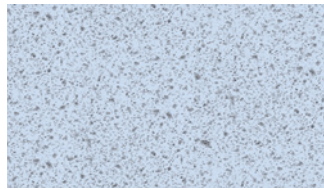
Speckled White



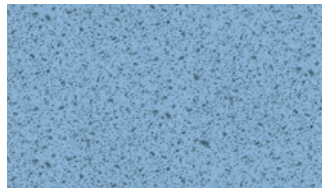
Speckled Pastel Grey



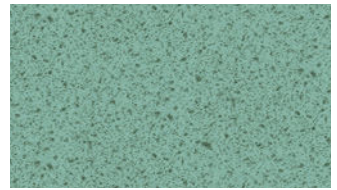
Speckled Silver Grey



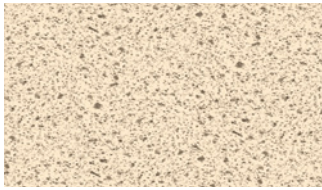
Speckled Icy Blue



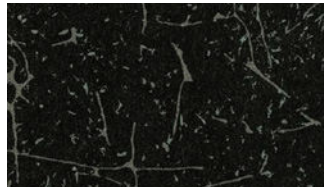
Speckled Powder Blue



Speckled Aquamarine



Speckled Sand



Black Craquele



Oak

Worktop Examples



Information

A cost effective, hard wearing general purpose work surface material suited to most educational open bench top and some fume cupboard worktop applications.

The mottled/speckled finishes have proven to be more serviceable in terms of not showing staining and surface scratches. The plain colours are equally hard wearing but a little more care is needed in cleaning spillages immediately, we would also advise not dragging equipment across the worktops to minimise visible scratches.

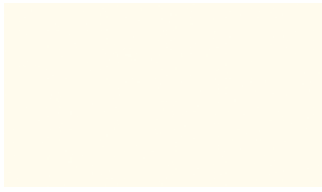
Notes:

Trespa Toplab Plus (formerly TopLab)



Colour Options

The colours shown here are a representation of the actual colour, a sample can be provided if required.



White



Pastel Grey



Silver Grey



Slate Grey



Pastel Grey / Silver



Glacier Blue



Black

Notes:

Large dashed box for notes.

Worktop Examples



Information

A hard wearing general purpose work surface material suited to most scientific open bench top and some fume cupboard worktop applications.

Toplab Plus provides better general chemical resistance than Toplab Base. The mottled/speckled finishes have proven to be more serviceable in terms of not showing stains or surface scratches. The plain colours are equally hard wearing but a little more care is needed in cleaning spillages immediately, we would also advise not dragging equipment across the worktops to minimise visible scratches.

Colour Options

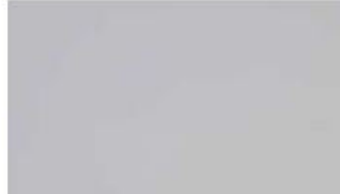
The colours shown here are a representation of the actual colour, a sample can be provided if required.



Everest



Cameo White



Pearl Grey



Linen



Aurora



Silt



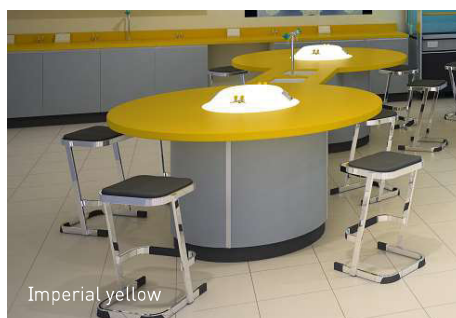
Dove

Before choosing any of the above colours we recommend referring to the manufacturers documentation for suitability of different colours for different worktop applications. Please also note that if Corian worktops are subjected to thermoforming there is potential for the areas subject to the process to appear a slightly lighter shade – This being more prevalent in the darker colours.

Worktop Examples



Midnight



Imperial yellow



Designer White

Information

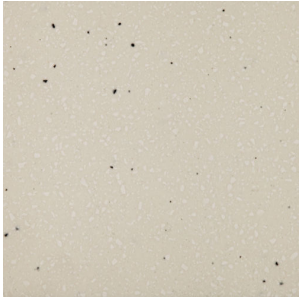
An excellent general purpose solid surface material suited to most scientific and other open bench top applications.

Worktop joints are seamless to the extent that they are not discernible to the touch and with some it is possible to achieve an invisible or near invisible joint using the lighter coloured mottled finishes, at worst a pencil line maybe visible in some instances. The mottled/speckled finishes have proven more serviceable in terms of not showing stains or scratches. The plain colours are equally hard wearing but a little more care is needed in cleaning spillages immediately, we would also advise not dragging equipment across the worktops to minimise visible scratches. Surface staining and scratches are easily removed by use of a domestic abrasive. More serious staining and scratches can be removed by sanding, deep score marks and impact damage can be invisibly repaired (some very faint pencil lines may be evident at repaired sections).

Notes:

Colour Options

The colours shown here are a representation of the actual colour, a sample can be provided if required.



Packice



Silver Dust

Notes:

Worktop Examples



Packice



Silver Dust

Information

A solid surface material which is hard wearing and suited to most scientific open bench top and many other applications.

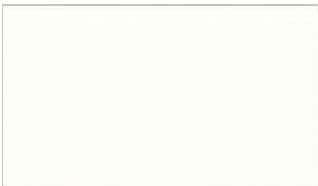
The mottled/speckled finishes have proven more serviceable in terms of not showing surface stains or scratches. Surface staining and scratching can be removed easily by use of a domestic abrasive. More serious staining and scratches can be removed by sanding, deep score marks and impact damage can be invisibly repaired (some very faint pencil lines may be evident at repaired sections).

Post Formed Laminate



Colour Options

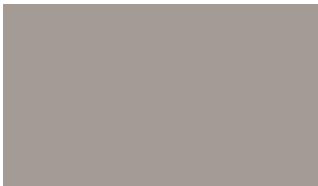
The colours shown here are a representation of the actual colour, a sample can be provided if required.



Pure White



Midnight



Gris Paloma



Maryland Fonce



Kota



Butcher Block

Notes:

Worktop Examples



Information

A lowest cost general purpose work surface material suited to most educational open bench top applications but not for use in areas where chemicals or corrosive materials may be used.

The mottled/speckled finishes have proven to be more serviceable in terms of not showing staining and surface scratches. The plain colours are equally hard wearing but a little more care is needed in cleaning spillages immediately, we would also advise not dragging equipment across the worktops to minimise visible scratches.

Door & Drawer Fronts



Colour Options

The colours shown here are a representation of the actual colour, a sample can be provided if required.



Edging

Edging is always supplied on a "closest match available" basis in comparison to the door and drawer fronts, unless otherwise stipulated. Please note: Edging is not always the exact same colour as the fronts depending on colour choice. Especially if a patterned or mottled colour is chosen.

Door & Drawer Examples



Door & Drawer Fronts



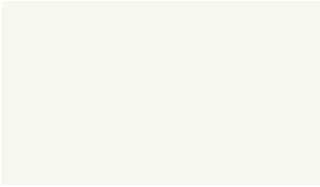
Information

The S+B standard range has been developed to provide choice and also to maximise order processing, purchasing, planning, manufacture, waste management and installation efficiency.

Notes:

Colour Options

The colours shown here are a representation of the actual colour, a sample can be provided if required.



White



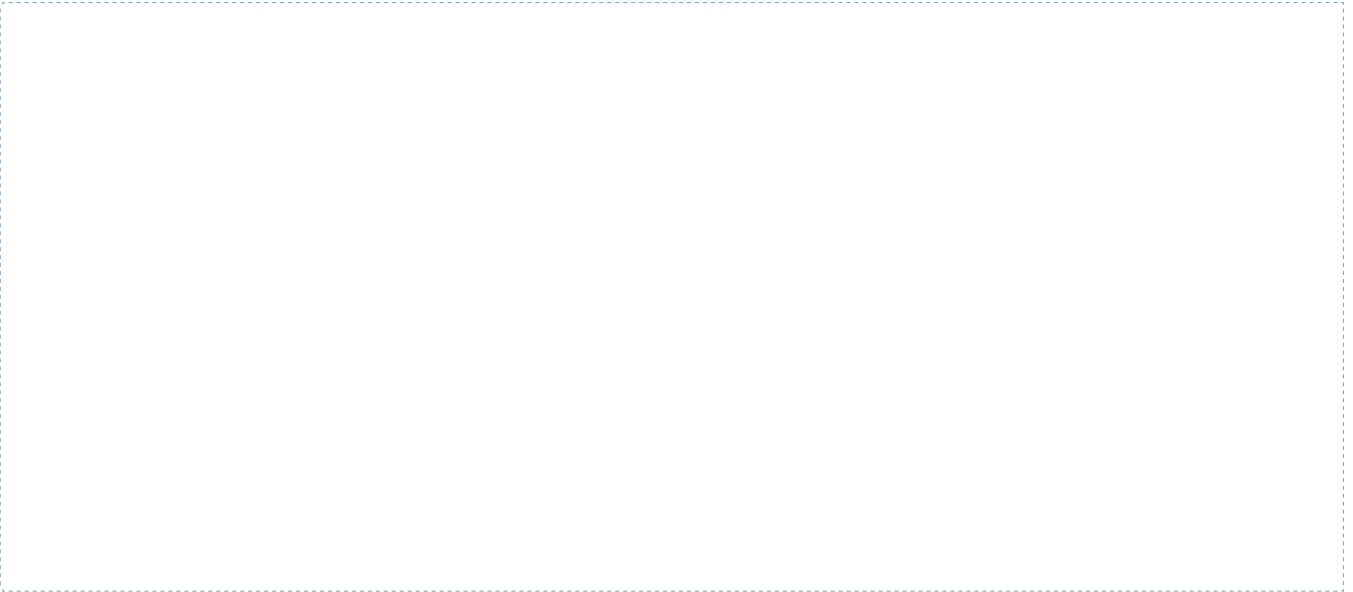
Grey



Silver

Please Note: All electrical ped boxes will be supplied in light grey regardless of the metal work colour choice, unless specifically discussed and agreed with S+B prior to order placement

Notes:



Metalwork Examples



White



Grey



Silver